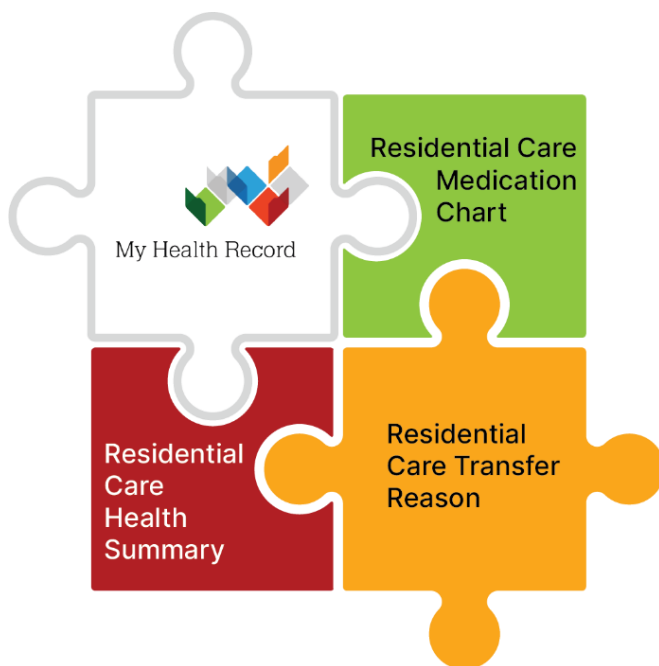
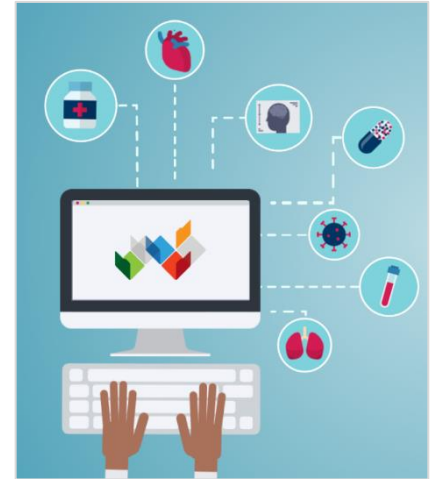


Aged care transfer summary

About aged care transfer summary

New documents will soon be available to view in the My Health Record system. These will contain essential health information about an aged care resident to support clinical hand-over when an individual is transferred from a residential aged care home to a hospital.

The new documents are the Residential Care Transfer Reason*, Residential Care Health Summary*, and Residential Care Medication Chart*. They can be uploaded by a residential aged care home if their software enables uploading.



How the Residential Care Transfer Reason functionality will work

Residential aged care homes will have the ability to upload the reason and date of transfer, triggering the creation of a Residential Care Transfer Overview in My Health Record.

The Residential Care Health Summary and Residential Care Medication Chart include key health and medicines information. These can be uploaded at the same time as the Residential Care Transfer Reason or at a later stage.

The Overview will also include links to other existing clinical documents in the resident's My Health Record such as their latest shared health summary, discharge summaries, advance care planning documents and directives, and immunisation records.

If other healthcare professionals involved in the resident's care are connected to My Health Record, they will be able to access the Residential Care Transfer Overview.

**This functionality is expected in 2024.*

Aged care transfer summary – Ray's user journey



Ray, an 86-year-old living in a residential aged care home, experiences confusion and a health decline, prompting an emergency transfer to a hospital.

After calling ambulance the registered nurse updates Ray's progress notes and uploads a Residential Care Transfer Reason, Residential Care Health Summary, and Residential Care Medication Chart to My Health Record using the RACH's care/clinical management systems.

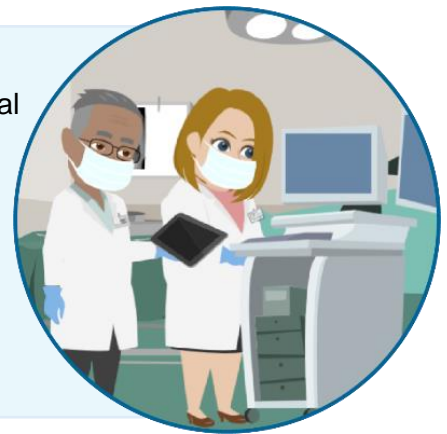
My Health Record consolidates these into a Residential Care Transfer Overview (view) which provides links to the uploaded documents and other clinical documents available in Ray's My Health Record.



On arrival, paramedics prepare Ray for transfer and receive printed copies of these documents, plus any relevant information, to support communication during the handover at the hospital.

In the hospital, healthcare providers in the emergency department can access Ray's My Health Record to view the documents in the Residential Care Transfer Overview, and any other relevant information available in Ray's My Health Record.

With insights into Ray's medical history of benign prostatic hyperplasia (BPH) and his recent history of acute confusion, the ED physician diagnoses a urinary tract infection, which is confirmed through further testing.



Hospital pharmacists use the Residential Care Medication Chart for safe dispensing of additional medications ordered by Ray's ED Physicians.

Ray's advanced care planning document aids understanding of his care preferences during his two-day admission.

Ray's health improves, and he is discharged and transferred back to the residential aged care home.



The Residential Care Transfer Overview in Ray's My Health Record is invaluable in facilitating a smooth transfer from the residential aged care home to the hospital. It enables quick access to key health information and aids in the timely diagnosis and management of Ray's condition. Having Ray's health information available in My Health Record means Ray and his family do not need to keep repeating his entire medical history each time he sees a new healthcare provider.